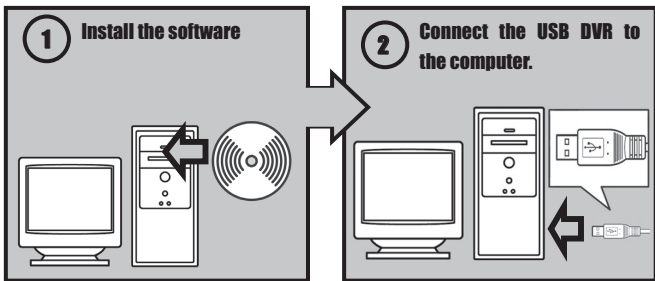


USB DVR Starter Guide

You must install the software bundled on the *Install CD* before connecting the USB DVR to the computer.



This guide explains how to install the software programs and briefly introduces their functions and operating procedures.

Table of Contents

Read This First	2
Description	2
Specifications	2
System Requirements	2
Hookup Diagram	3
 Installing the Software and USB Driver	 4
Installation Procedures	4
Wiring the USB DVR	10
Check the USB Driver	13
 Using the Host Software - The Basics	 14
Getting Started	14
Setup Mode	16
Upload Settings	26
 Using the Host Software - Advanced Techniques	 27
How to Remote Viewing by Picasa	27
How to Remote Viewing by IP Address	31
 Using the Search Software	 34
Getting Started	34
How to Search by Date	36
 Troubleshooting	 37
Start by Checking This	37
Problems	37

Description

The UDVR is a simple way to create a versatile high specification CCTV system with recording and remote view capability using a fairly standard PC.

Put photos on your own Picasa web album, and built-in web and wap server. Use it you can view home via web browser or mobile phone.



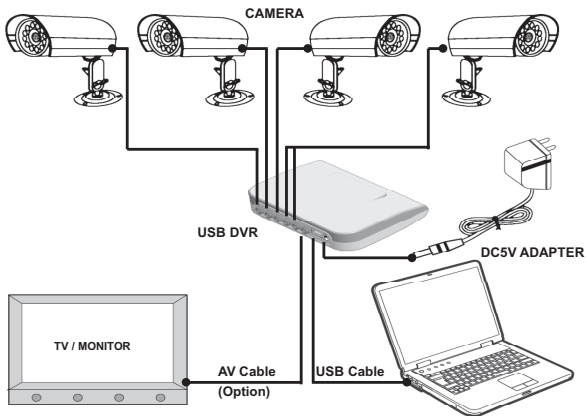
Specifications

Video	Input	4CH RCA, PAL or NTSC
	Output	1CH RCA
Audio	Input	1CH RCA
Display	Speed	640x480 (100fps@PAL), 640x480 (120fps@NTSC)
	Speed	640x480 (100fps@PAL), 640x480 (120fps@NTSC)
Recording	Compression Method	WMV Compression of Software
	Mode	Motion, Schedule, Upload
Playback	Display	Full screen, Normal size
	Search Mode	Date
Remote View	Mode	Via web browser or mobile phone
Alarm Control Part	Alarm trigger	Motion, Signal/Device lost
	Alarm output	E-mail alert, Play alarm sound, Event record
HDD Manage	Mode	Overwrite
Interface	Style	USB2.0

System Requirements

- USB2.0 PC with 1.8GHz processor (Recommended : Above Pentium-IV 2.0GHz)
- 128MB RAM (Recommended : Above 256MB)
- 10GB available hard disk space (Recommended : Above 40GB)
- 1024x768 resolution or best color monitor
- Windows 2000 or Windows XP, Windows Vista
- DirectX 9.0C or higher
- Sound card, Sound box (Recommended)

Hookup Diagram



Key :

(1) – (4) Video Inputs

Connects your cameras to the UDVR, yellow RCA.

(5) Audio Input

Connects your camera's audio to the UDVR, red RCA.

(6) Video Output

Sends video to your TV, or Monitor.

(7) USB2.0 Port

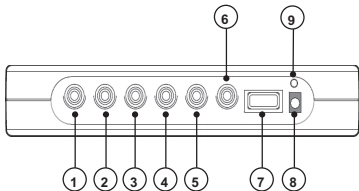
Connects to your computer's USB2.0 port.

(8) DC In

Connects the DC5V adapter to the UDVR.

(9) Power LED

Lights up when UDVR is active.



Installing the Software and USB Driver

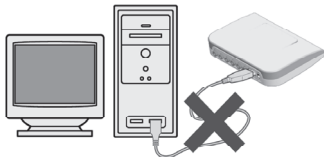


- You must install the software before you connect the UDVR to the computer.
- You must have authorization as a Computer System Administrator to install programs.

Installation Procedures

1 Confirm that the UDVR is NOT connected to the computer.

If it is, disconnect the cable. The software cannot be properly installed if the UDVR is connected to the computer at the start.



2 Close any programs that are running.

3 Place the Install CD in the computer's CD-ROM drive.

If the installer panel does not appear automatically, use the following procedures.



How to Display the Installer Panel

Use the following procedures to display the installer panel if it does not appear automatically.

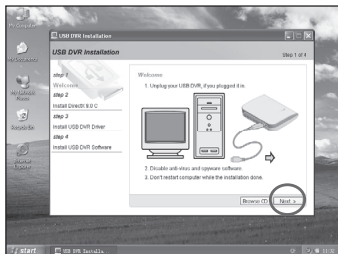
1. Double-click the [My Computer] icon on the desktop.
2. Right-click the CD-ROM icon and select [Open].
3. Double-click the [AutoRun.exe]* icon.

* Some computers may not display the [.EXE] file name extension as shown above.

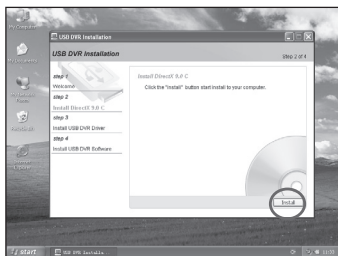
4 Read the installation notes and click [Next].

The installation will start.

Follow the on-screen instructions to proceed with the installation.



5 Next you will see the "Install DirectX 9.0 C". Click [Install].

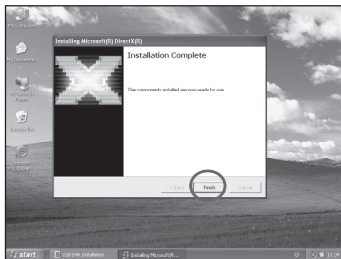


6 You will see the "Installing Microsoft(R) DirectX(R)" windows. Click the "I accept the agreement" and click the [Next] button as shown right.

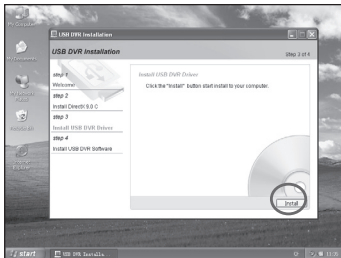
Click [Next] or [Install], follow the on-screen instructions to proceed with the installation.



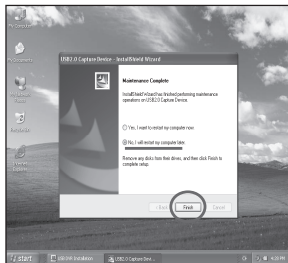
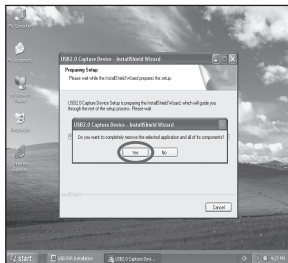
- 7 Wait until you see the "Installation Complete" window appear. Click the [Finish] button to continue.



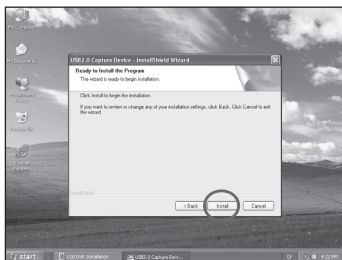
- 8 Wait few seconds, you will see the "Install USB DVR Driver". Click [Install].



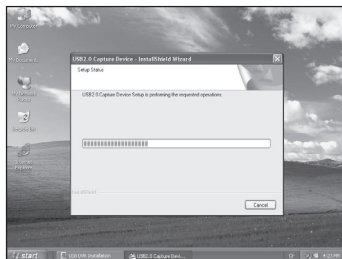
- 9 If you see the "remove the selected application" dialog box appear. Click [Yes] and wait until you see the "Uninstall Complete" window appear. Click the "No, I will restart my computer later" and click the [Finish] button to continue.



- 10** Wait few seconds, you will see the "Ready to Install the Program". Click [Install].

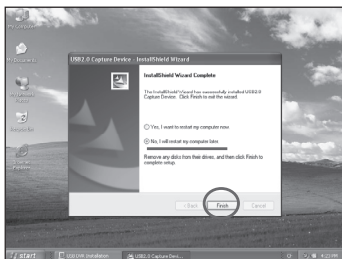


- 11** You will see the "Setup Status" window indicating that the installation is proceeding.

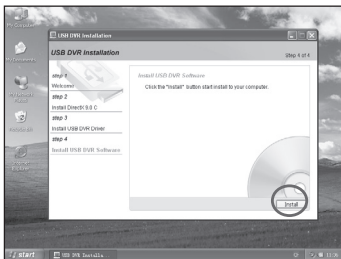


- 12** Wait until you see the "InstallShield Wizard Complete" window appear. Click the "No, I will restart my computer later" and click the [Finish] button to continue.

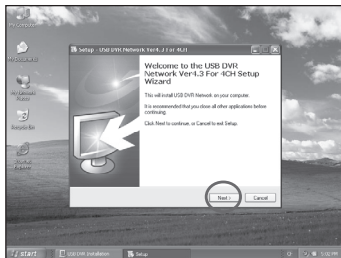
If you see the confirmation dialog appear, click "OK" to continue.



- 13** Wait few seconds, you will see the "Install USB DVR Software". Click [Install].

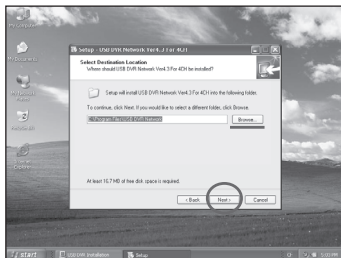


- 14** Wait few seconds, you will see the "Step –USB DVR NETWORK". Click [Next].

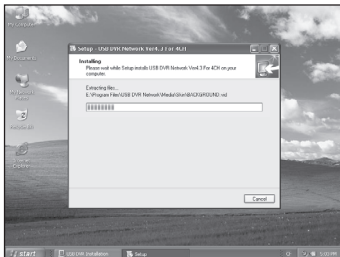


- 15** The next window lets you choose the Destination folder for installing the software files. We recommend you use the default location used by the installer, but you can choose a different location if you want by clicking the Browse button. Then click [Next].

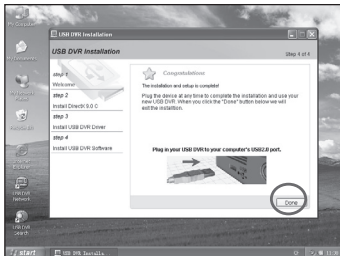
Click [Next] or [Install], follow the on-screen instructions to proceed with the installation.



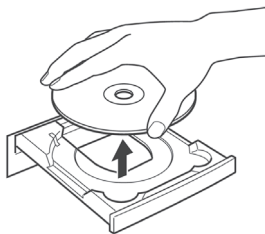
- 16** Wait until you see the "Completing the USB DVR Network" window appear. Click the [Finish] button to continue.



- 17** Wait few seconds, you will see the "Congratulations". Click [Done] to finish the installation.



- 18** Remove the disk from the CD-ROM driver. This concludes the software installation. Continue by connecting the USB DVR to the computer so that the USB driver can be utilized.



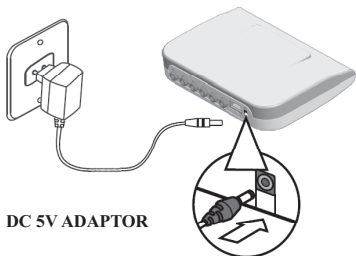
We recommend you restart computer immediately after remove the disk.

If you restart computer, please wait until your normal desktop screen appears after restarting, and proceed to **Step 19** (p. 10).

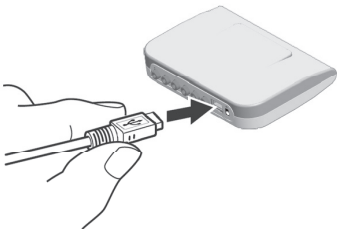
- 19** Connect the adaptor to the adaptor jack [**DC IN**] and plug it to the electrical outlet.

The LED indicator will light up.

If the LED indicator does not light up, please check the connection between the adaptor and the UDVR

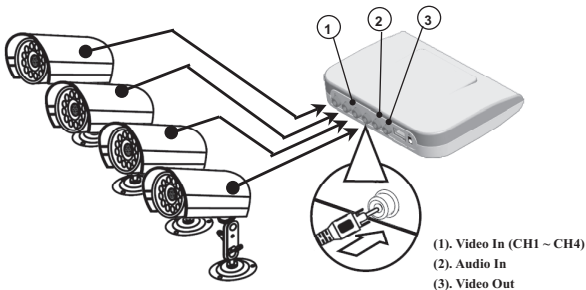


- 20** Connect the USB cable to the UDVR's USB port.

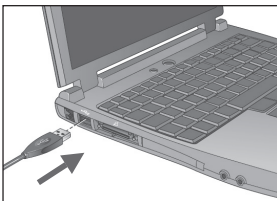
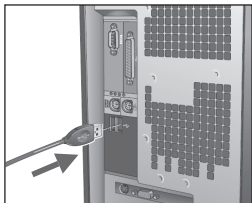


- 21** Connect the camera's **yellow RCA** to the UDVR's **yellow** video in port for channels 1~4 [**CH1 ~ CH4**].

The UDVR support 1 channel audio input (**Red RCA**), and a video out port (**Yellow RCA**) for you connect to the TV or Monitor (The video out is only activate when the UDVR software starts).



22 Connect the USB DVR to the computer's USB port.



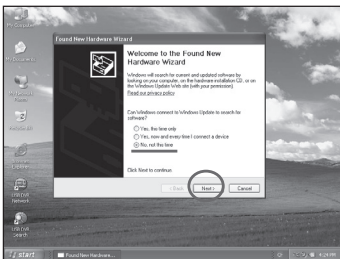
23 The USB driver will installing onto the computer when you connect the USB DVR.

Dialog similar to the following will appear during this process (**first time the UDVR is connected to a computer only**).

The “Syntek STK1160” dialog on the right will appear after a few moments.

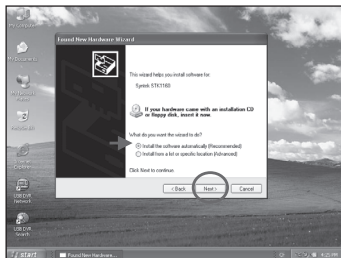


24 Wait few seconds, you will see the Found New Hardware Wizard window appear. Click “No, not this time” and click [Next] to continue.

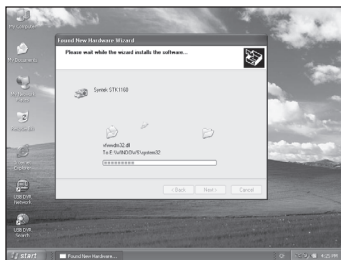


- If you experience problems installing the USB Driver, first uninstall it (p. 13) and then reinstall it.
- See **Check the USB Driver** (p. 13) to check and delete the USB driver installed with these procedures.

- 25** The next window, click “**Install the software automatically (Recommended)**” and click [Next].



- 26** You will see the progress bar window indicating that the installation is proceeding.

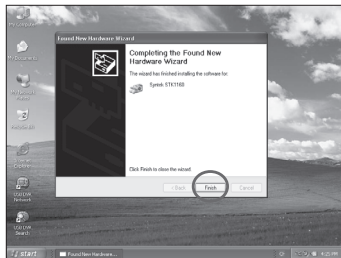


- 27** Wait until you see the “**Completing the Found New Hardware Wizard**” window. Click the [Finish] button to finish the installation.

This concludes the software and USB driver installation and the procedures for connecting the USB DVR to the computer.

You may now use the USB DVR on the computer.

You can see *Check the USB Driver* (p. 13) to check the state.

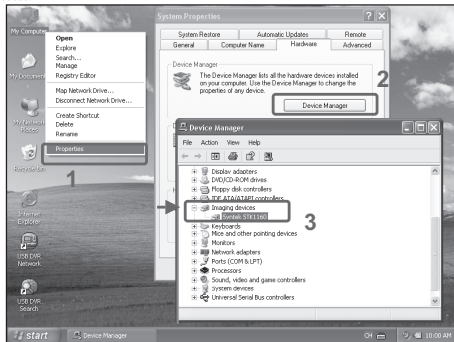


Check the USB Driver

Check the USB Driver with the following procedures. (USB DVR is connected to the computer)

1. Right-click the [My Computer] icon on the desktop, and click [Properties].
2. Click the [Hardware] tab, and click the [Device Manager] button. The [Device Manager] dialog will appear.
3. Click the [+] symbol beside the [Sound, video and game controllers], and/or [Imaging devices] category.

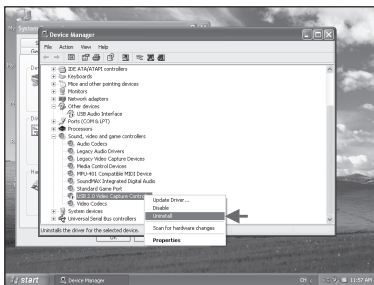
Your USB DVR model name or [Syntek STK1160] will display in these categories, if it was installed success.



If you see the yellow "!" symbol in these categories, please delete the device with the following procedures.

1. Select [USB 2.0 Video Capture Controller], [Syntek STK1160] or [STK1160 Grabber], right-click and select [Uninstall].
2. Click [OK] in the confirmation dialog.
3. Close [Device Manager] or [System Properties].

Reinstall the USB driver with the procedures in *Installing the Software and USB Driver* (p. 4).



Using the Host Software – The Basics

Getting Started

The software can be started by double-click the [USB DVR Network] icon on the desktop or by using the Start menu. The Following window should appear:




You can see the **Key Description** (p. 15).



- The software will check always automatically whether the USB device is connected or not correctly. When start UDVR Host software or during execution, if the USB cable is not connected correctly or removed, the "Auto check USB device" message window will appear.
- At this moment, if you connect USB cable or power cable correctly, *wait few seconds*, this window disappears.
- And if you click 'Shutdown' button, the Host software is shutdown.



Key Description:

1	Date/Time/HDD Viewer	<ul style="list-style-type: none"> • Date and Time Status Display (Current) • HDD Storage Status (% Used) • The Recycle HDD yellow icon [HDD] is shown if in overwrite mode
2	One Screen	Click here to enter the Full display mode.
3	Quad Screen	Click here to enter the Quad display mode.
4	Work Status Viewer	<ul style="list-style-type: none"> • Display the enable function
5	Search	<ul style="list-style-type: none"> • Click here to enter the Search mode. • You can search history by date.
6	Setup	<ul style="list-style-type: none"> • Click here to enter the Setup mode. • The default password of administrator are "123456"
7	Upload	<ul style="list-style-type: none"> • Click here to enter the Upload settings. • You can setting your <i>Picasa Web Album</i> account, for picture upload.
8	Volume Control	<ul style="list-style-type: none"> • Control the volume by moving the volume control button.
9	Speaker On/Off	<ul style="list-style-type: none"> • Clicking the speaker button enables you to listen to the sound transmitted from the connected UDVR.
10	Shutdown	Click this button to shutdown the Host software.
11	Channel Select	Using these buttons, each individual camera is selectable or open/close .
12	Recording indicating	Indicating that the video is recording.
13	Alarm indicating	Indicating that the alarm is occur.
14	Stop Alarm	Stop the alarm out when alarm occur.
15	Log View	<ul style="list-style-type: none"> • You can see the details event logs. • You can see the log list by day be of saving list daily.
16	Take photo	Snapshot, Click the button to take a photo.
17	Record video	Click the button to take a video.  For long time recording, please use "Schedule" (p.19).

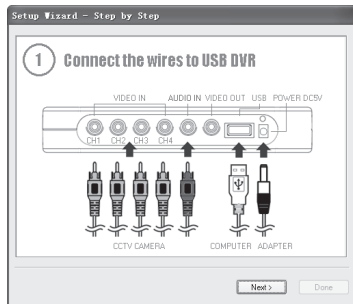


- The default password of administrator for **Host** software are "123456".
- You can change password of administrator at the [Setup]->[Security] (p. 23) setup panel.

If you are first time run the UDVR software, the “Setup Wizard - Step by Step” window should appear :

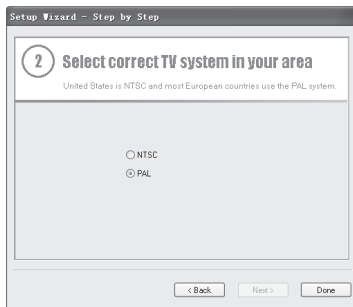
- (1). Connect the wires to the USB DVR, and then check the wires is correct.

Click the “Next >” button to continue.



- (2). Select correct TV system in your area.

United States is NTSC and most European countries use the PAL system



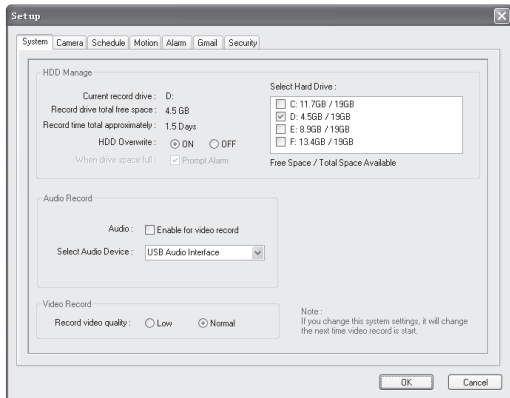
- (3). Click the “Done” button to finish the setup.

You can change the TV system at the [Setup]->[Camera] (p. 18) setup panel.

Setup Mode

Click the **Setup button** (p. 14-15) from the main application window to enter the setup mode. You will be prompted to enter your password before proceeding to Setup mode. Input your password and click [OK] to continue.

1 System Setup



► **Select Hard Drive** : Setup the drive used for recording.

► **HDD Overwrite**: Enable the HDD to overwrite when full.

- On: When the selected record drive is full (when free space is under 500MByte), the DVR will begin overwriting the drive from the beginning.

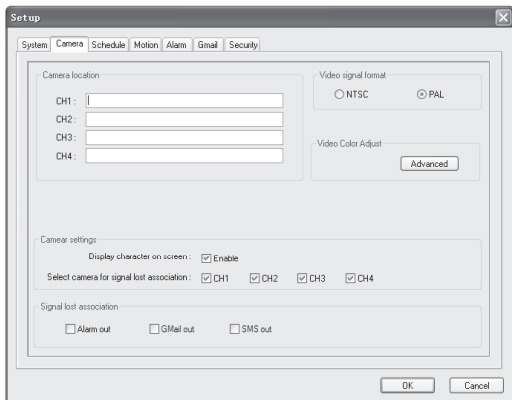
- * Whenever free space is under 500MByte, the UDVR system creates the free space of 1.0GByte by erasing oldest data to save new recording data.

- Off: When the selected record drive is full (when free space is under 500MByte), the DVR will stop recording, if check box [Prompt Alarm] was selected, alarm is out.

► **Audio Record**: If enabled, the audio is recorded in video-recording file.

► **Record Video Quality**: Record video quality settings.

2 Camera Setup




► **Camera location** : Describe the location where the selected camera is installed. This name will be displayed on screen when viewing this camera.

► **Video signal format** : Select correct TV system in your area.
(United States is NTSC and most European countries use the PAL system.)

► **Video color adjust** : Adjust the Brightness, Contrast, Hue, and Saturation of the Camera.
(Pressing 'Default Color' will reset to Original Color Settings.)

► **Camera settings** : Display character on screen
Displays the information with each camera on screen.
Select camera for signal lost association
Enable / Disable each camera (4 channel) to video loss detection.

► **Signal lost association** : Alarm out.

If checked, the alarm will be operated according to *[Alarm]* (p. 19) setup when lost signal occurs at this camera, and then the alarm icon () will be displayed.

Gmail out.
If checked, the picture-mail will be sent according to *[Gmail]* (p. 22) setup when lost signal occurs at this camera.

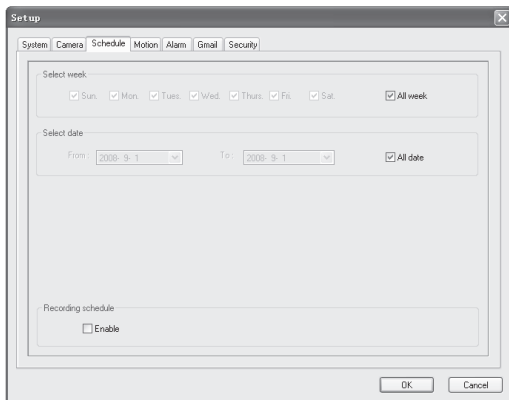
SMS out

If checked, the sms text message will be sent according to *[SMS]* (p. 24) setup when lost signal occurs at this camera.



- If [Gmail out] be checked, you must setup the *[Gmail]* tab (p. 22).
- If [SMS out] be checked, you must setup the *[SMS]* tab (p. 24).

3 Schedule Setup



► **Select week** : Appoint the week for the recording schedule.

► **Select date** : Select days for the recording schedule

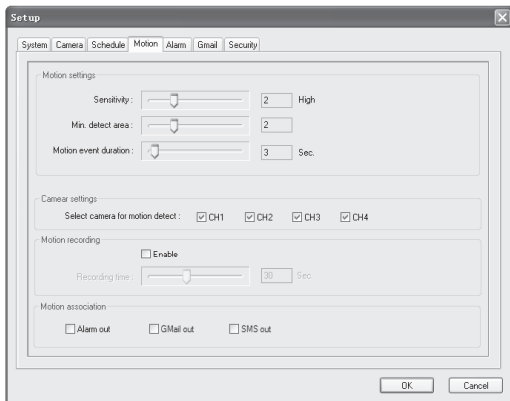
Note : When you selected [Select week] and [Select date] is active, the schedule record setting will be active in that day. Else it will be ignore in that day.

For example set as workday : From “2008-9-1” to “2008-9-3”, and week “Tues”.


the schedule record setting will be active in the day : 2008-9-2 (Tuesday).

► **Recording schedule** : If you selected enable, software will record according to your schedule time zone.

4 Motion Setup



- ▶ **Sensitivity** : Setup the sensitivity of brightness in the motion-detection region.
- ▶ **Min. detect area**: Setup the rate (sensitivity) of motion detection in the motion-detection region by minimum size of motion-detection area. The larger the number is, the lower the sensitivity. Conversely, the smaller the size(number) is, the higher the sensitivity.
- ▶ **Motion event duration**: Setup the motion-detection duration. (1~60 sec)
- ▶ **Camera settings**: Enable / Disable each camera (4 channel) to motion detection.
- ▶ **Recording time**: Setup the recording duration when motion occurs. (10~60 sec)
If enable, software will record according to your duration when motion occurs.
- ▶ **Signal lost association** : Alarm out.

If checked, the alarm will be operated according to *[Alarm]* (p. 19) setup when motion occurs at this camera, and then the motion icon () will be displayed.

Gmail out.

If checked, the picture-mail will be sent according to *[Gmail]* (p. 22) setup when lost signal occurs at this camera.

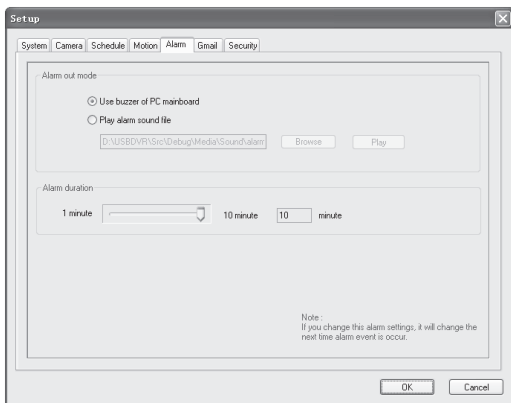
SMS out

If checked, the sms text message will be sent according to *[SMS]* (p. 24) setup when lost signal occurs at this camera.



Do not use this function in an area where many objects are continuously Moving or when interference from unwanted signals occurs. In case of this, please use *Schedule* (p. 19) to continuous recording.

5 Alarm Setup



► **Alarm out mode :** Use buzzer of PC mainboard.

If selected, alarm use buzzer of pc mainboard when alarm event occur.

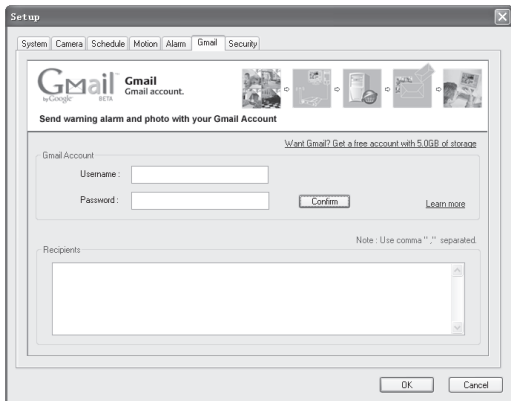
Play alarm sound file.

If selected, speaker play alarm sound file (wav) when alarm event occur.

► **Alarm duration:** Setup the duration that the output will sound when an alarm occurs. (1~10 minute)

6 Gmail Setup

Captured images can be sent to specified recipients via e-mail with your **Google Gmail Account** when event upon alarm conditions.



► **Gmail Account** : Input your Username and Password.

If you have not Gmail Account, please click “*Want Gmail? Get a free account with 5.0 GB of storage*” to get a free account.

Click [Confirm] to check your Gmail Account.

About Gmail, please click [Learn more].

► **Recipients** : Enter the mail address of a recipient.

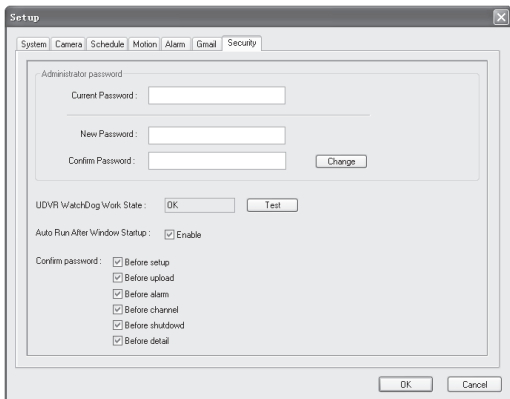
The mail address of recipient, please use comma “,” separated.

For example : recipient1@hello.com, recipient2@hello.com,



- You must have Internet access for this feature to work.

7 Security Setup



- **Administrator password:** Changes the administrator password.
 - Current Password : Enter the current use password.
 - New Password : Enter the new password.
 - Confirm Password : Enter again the new password.
 Click [Change] to changes the administrator password.
- **UDVR WatchDog Work State:** Click [Test] to check the work state.
- **Auto Run After Window Startup:** You can set your USB DVR software to start up automatically when Windows starts.
- **Confirm password :** Check to confirm password before you execute the following.



- When start UDVR Host software or during execution, if the Host software **termination of the accident**, the “UDVR WatchDog” message window will appear.
- Wait few minutes, WatchDog will restart the Host software, at this moment, this window disappears.
- And if you click ‘cancel’ button, the WatchDog will delay a few minutes to restart the Host software.



8 SMS Setup

The USB DVR send the SMS alerts to your mobile phone with your **Google Calendar Account**, so that you need to activate the google calendar SMS notification (See “**Getting Detailed Guide**”).

► **Calendar Account** : Input your Username and Password.

If you have not Calendar Account, please click “**Want Calendar? Get a free account**” to get a free account.

Click [Confirm] to check your Calendar Account.

► **USB DVR Location** : Enter the USB DVR location.

► **Getting Detailed Guide** : Please click the “**How to use google calendar SMS notification?**”.

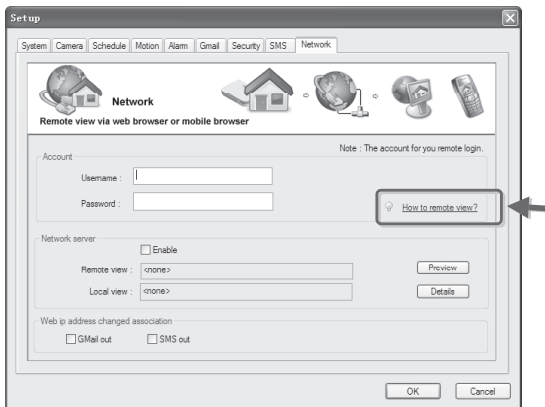


To **check if your mobile carrier is supported** ,
please visit :
<http://www.google.com/support/calendar/bin/answer.py?answer=37226>



- The delivery of SMS messages may be delayed if your mobile provider's traffic is heavy, the delay less than 10 minutes commonly.
- The USB DVR only send the first SMS alert to your mobile, while multiple alarm event occurring in 5 minutes.

9 Network Setup



► **Account:** For you remote login.

► **Network server:** Enable.

Enable or Disable the network feature.

Remote view.

Show your web ip address (include port). To remote view, please use it.

Local view.

Show your local ip address (include port). To local view, please use it.

► **Web ip address changed association:**

Gmail out.

If checked, the e-mail (include new ip address) will be sent according to *[Gmail]* (p. 22) setup when web ip address changed.

SMS out

If checked, the sms text message (include new ip address) will be sent according to *[SMS]* (p. 24) setup when web ip address changed.

► **Getting Detailed Guide :** Please click the “How to remote view?”.



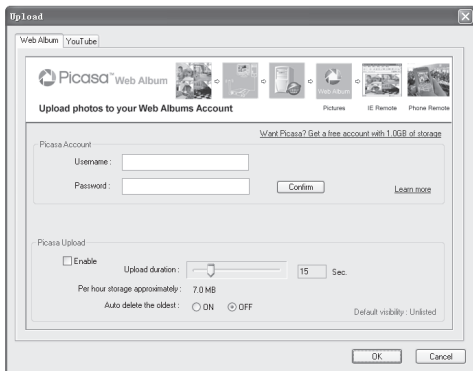
- You must have Internet access for this feature to work.
- See *How to Remote Viewing by IP Address* (p. 31).

Upload Settings

Click the **Upload button** (p. 14-15) from the main application window to enter the upload settings. You will be prompted to enter your password before proceeding to upload settings. Input your password and click [OK] to continue.

1 Web Album Settings

Automatic update photos to **Picasa Web Album** with your picasa account. Use it you can view home via web browser or mobile phone.



► **Picasa Account** : Input your Username and Password.

If you have not Picasa Account, please click “**Want Picasa? Get a free account with 1.0 GB of storage**” to get a free account.

Click [Confirm] to check your Picasa Account. Click [Learn more] to get help.

► **Picasa Upload** : Enable.

If enable, software will automatic update photos according to your settings.

Upload duration.

Setup the automatic upload photos duration.

Auto delete the oldest.

-ON When the web album is full (when free space is under 1MByte), the software will begin overwriting the album from the beginning. (Erasing the first oldest day photos).

-OFF When hen free space is under 1MByte the software will stop upload.



- You must have Internet access for this feature to work.
- See *How to Remote Viewing by Picasa* (p. 27).

Using the Host Software — Advanced Techniques

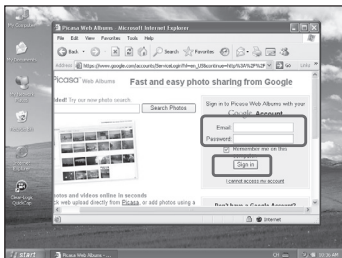
How to Remote Viewing by Picasa



- You must enter the picasa account and enable the picasa upload before you remote viewing by picasa.
- See *Web Album Settings (p. 26)* to settings.

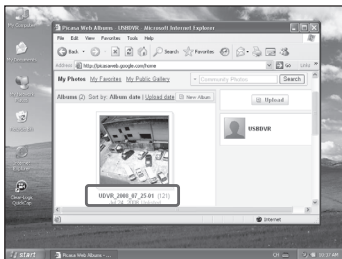
1 Remote Viewing via Web Browser

- (1) Open your web browser (Such as : Internet Explorer), and visit here : [Http://picasaweb.google.com](http://picasaweb.google.com)

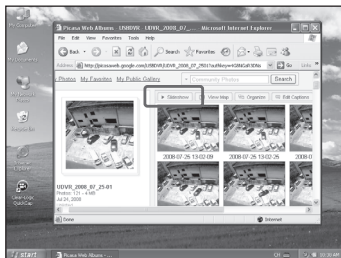


- (2) You will see the "Sign in" homepage appear. Enter your Username (Gmail Account) and Password, click the [Sign in] button to continue.

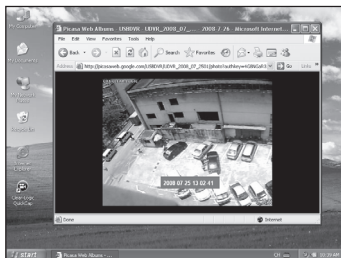
- (3) The next page you can see the *Picasa Web Album* contents. The UDVR software will uploaded photos into "UDVR_YYYY_MM_DD_XX" album, such as: UDVR_2008_07_25_01, click it to view detail.



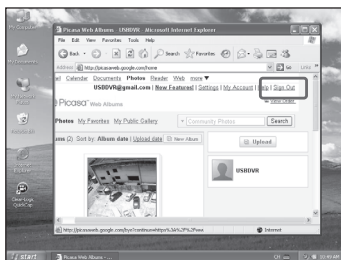
- (4) The next page you can see the album detail contents. The photos name is “YYYY_MM_DD HH-MM-SS”, such as: 2008_07_25 13-02-09 .



- (5) You can click the [Slideshow] button to play the photos.



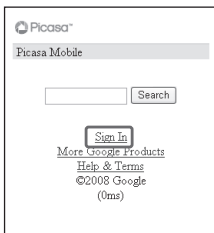
- (6) You can click the [Sign Out] button to exit.



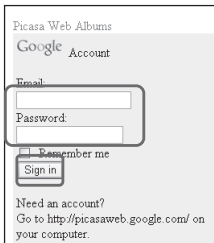
• Learn more, please visit here : <http://picasa.google.com/support>

2 Remote Viewing via Mobile Phone

- (1) Open your mobile browser from your mobile phone, and visit here :
[Http://picasaweb.google.com/m](http://picasaweb.google.com/m)
 Click the [Sign In] to continue.



- (3) You will see the "Sign in" homepage appear. Enter your Username (Gmail Account) and Password, click the [Sign in] button to continue.



- (3) The next page you can see the *Picasa Web Album* contents. click the album name to view detail.



- (4) You can click the [Sign Out] button to exit.



3 Picasa Web Album for Mobile requirements

Your phone will need to meet the following minimum requirements to access Picasa Web Albums for mobile:

- Your phone's web browser must be **XHTML compliant**. To determine whether or not your browser is compatible, please point it to www.google.com/xhtml and perform a search. If it doesn't work, your browser may not be XHTML compliant.
- Your phone's browser must have cookies enabled and your mobile network must also **allow cookies**. The setting for cookies is usually located in your browser's Settings menu. In addition, you'll need to contact your mobile service provider to determine whether or not they allow cookies on their network.
- Your mobile phone network must allow **secure SSL traffic**. You'll need to contact your mobile provider to check this too.



• Learn more, please visit here : <http://www.google.com/mobile>

How to Remote Viewing by IP Address



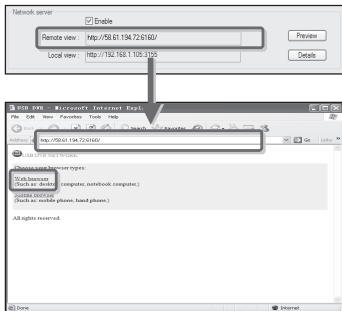
- You must enable the network feature before you remote viewing by ip address.
- See *Network Setup* (p. 25) to settings.

1 Remote Viewing via Web Browser

(1) Open your web browser (Such as : Internet Explorer), and visit the **Remote view** ip address, such as : **http://58.61.194.72:6160** (Only for this article describes)

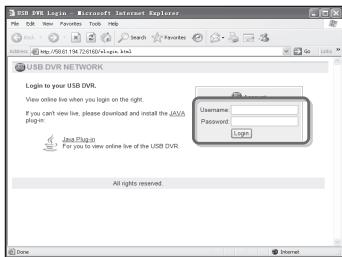
You will see the web site appear, click the "**Web browser**" to continue.

See "**Network Setup**" (p.25).

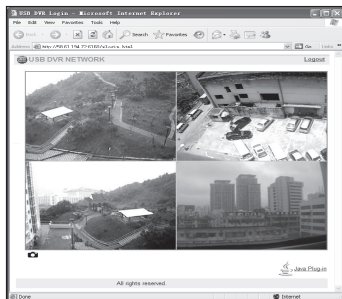


(2) You will see the "Login" homepage appear. Enter your Username and Password. Click the [Login] button to continue.

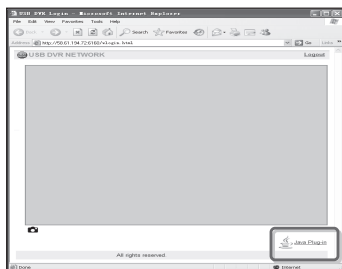
The Username and Password default is **blank**.



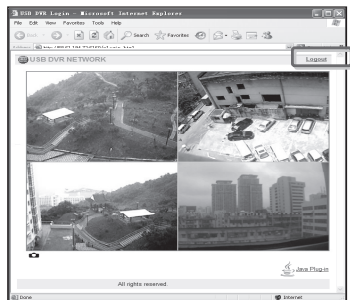
- (3) Now, you can view the remote image.



- (4) If you can't view the image, or only view gray background, please download and install the *JAVA Plug-in*.



- (5) You can click the [Logout] button to exit.



2 Remote Viewing via Mobile Phone

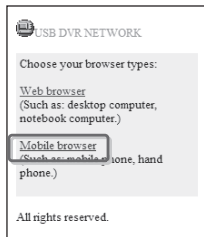
- (1) Open your mobile browser from your mobile phone, and visit the **Remote view** ip address, such as :

http://58.61.194.72:6160

(Only for this article describes)

You will see the web site appear, click the "**Mobile browser**" to continue.

See "**Network Setup**" (p.25).



- (2) You will see the "Login" page, enter your Username and Password, click the [Login] button to continue.

The Username and Password default is **blank**.



- (3) The next page, you will see a **still image** from the USB DVR.

The image will refresh when you hit a command such as "reload image" or "CH1" and so on.



3 Mobile requirements

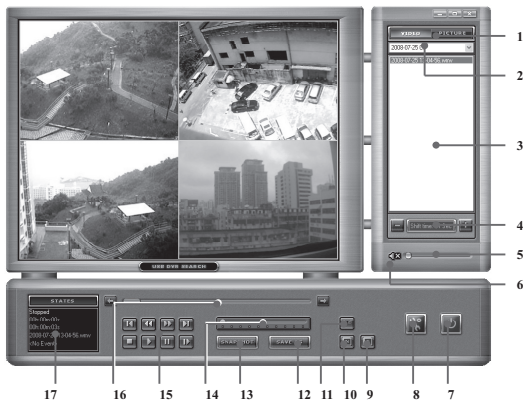
Your phone will need to meet these minimum requirements to access USB DVR for mobile:

- Your phone's mobile(or wap) browser must be **XHTML** compliant. To determine whether your browser is compatible, please go to www.google.com/xhtml and perform a search. If it doesn't work, your browser may not be XHTML compliant.
- Your phone's browser must have cookies enabled and your mobile network must also allow **cookies**.

Using the Search Software

Getting Started

The software can be started by double-click the [USB DVR Search] icon on the desktop or by clicking the **Search button** (p. 14-15) from the Host software. The Following window should appear:



You can see the **Key Description** (p. 35).



- When start Search software, the recorded videos and pictures will be searched by date. At this time, the “History Manage” message window will appear.
- *Wait few seconds*, when the software finish the search procedure, this window disappears.

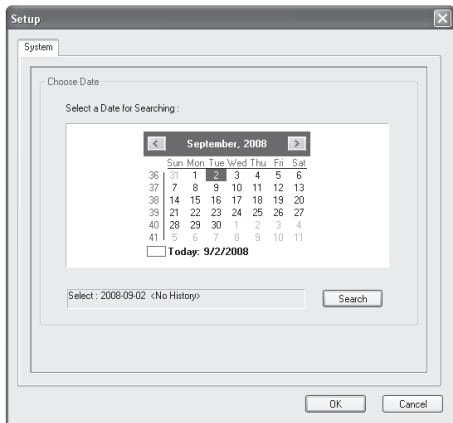


Key Description:

1	Videos/Pictures Selection	• Select the search history file style (videos or pictures).
2	Date Selection	• Select the search date.
3	File Viewer	• Display the file of date.
4	Picture shift time	• Change the picture shift time.
5	Volume Control	• Control the volume by moving the volume control button.
6	Speaker On/Off	• Clicking the speaker button enables you to playback the video audio.
7	Shutdown	Click this button to shutdown the Search software.
8	Setup	Click this button to search by date.
9	Full size	Display full – window image size.
10	Normal size	Display normal image size .
11	Through	Through play.
12	Save as	Save as the current file.
13	Snapshot	Take a photo from the current file.
14	Slow motion adjust	Adjust the slow motion playback speed.
15	Playback control button	Control the playback states, such as : Stop, Play, Go to First frame and so on .
16	Progress Bar	The progress bar indicating that the play time is progressing.
17	States	Display the current file information, such as : duration event and so an.

How to Search by Date

- (1) Open the Search software. See *Using the Search Software* (p. 34).
- (2) Click the [Setup] button (p. 34-35).
- (3) You can see the “Select a Date” window appear. Click the calendar to select the date, and click the [Search] button to search. If the selected date include history date, you will see the “Search OK” dialog box



Troubleshooting

Please read this section if you encounter a problem using the software.

Start by Checking This

Investigate the following points first if you encounter a problem.



Does your computer satisfy the requirements listed in the *System Requirements* section (p. 2)?



Is the USB DVR correctly connected to the computer?

Check to ensure that you are using the correct cable and that it is securely attached at both ends.



Is the USB DVR using by other software?

Check to ensure that you are not using the video processing software, USB DVR, or QuickCap software.

Problems

Try the suggested solutions to the common problems



USB driver installation not proceeding well.

Check the USB Driver (p. 13) before reinstalling it with the procedures in *Installing the Software and USB Driver* (p. 4).



Not found valid <USB DVR> video capture device! dialog box displays when the software is starting.

Solution 1

Click [OK] to close the window. Temporarily disconnect the USB DVR from the computer and the DC5V power (If applicable).

Next, read *Start by Checking This* on the previous paragraph and resolve the problem.

Solution 2

The USB Driver may not be correctly installed.

Install the USB driver with the procedures in *Installing the Software and USB Driver* (p. 4).

If the USB driver is already installed, check (p. 13) it first and the reinstall it.

